



**Kerfa®**  
 system solutions  
 for furnaces

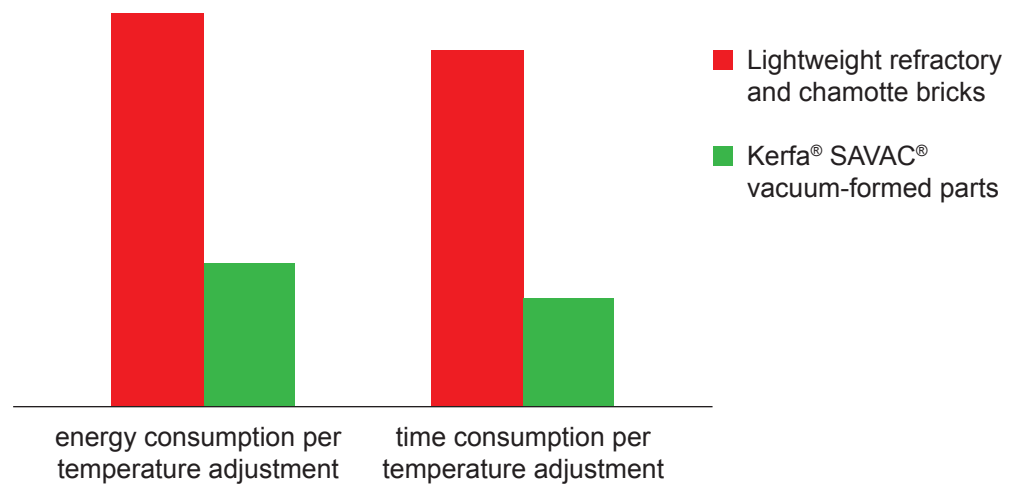
## Kerfa® Heating and Insulating Systems

Kerfa®, your partner for **industrial furnaces** and **appliances** with an extensive range of innovative **system solutions**.

Kerfa® produces efficient and long-lasting **electric resistive heating elements** as well as efficient **heating** and environmentally friendly **insulating systems**.

Innovative Kerfa® SAVAC® insulating systems contain **vacuum-formed, ceramic** or **biofibers** in varying compositions. They are produced to customer specification and offer significant **customer benefits** compared with conventional materials.

|                                  | Kerfa® SAVAC® vacuum-formed parts | Lightweight refractory and chamotte bricks |
|----------------------------------|-----------------------------------|--|
| Specific weight [kg/m³]          | 200                               | 700 - 2.400                                |
| Specific heat capacity [kJ/kg K] | 0,90                              | 0,96 - 1,09                                |



Kerfa® SAVAC® **biofibers** are categorized pursuant to EC directives as non-carcinogenic and do not require classification as a dangerous substance.

Kerfa® **heating elements** are made of high-grade alloys to ensure high power densities.

### Fields of application

- Industrial furnaces
- Laboratory furnaces
- Melting and holding furnaces for non-ferrous metals
- Thermal treatment facilities
- Protective gas generators
- Heating equipment and apparatus



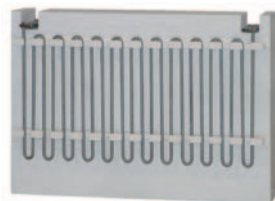
## Product examples



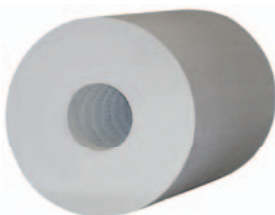
Meander heating segment (steel hooks)



Heating half shell (embedded heating wires)



Meander heating segment (ceramic holder)



Heating tube (embedded heating wires)



Insulating half shell

## Products

- Vacuum-formed Kerfa® SAVAC® insulating systems for gas-fired furnaces
- Vacuum-formed Kerfa® SAVAC® insulating systems for electrically heated furnaces
- Electric Kerfa® SAVAC® heating systems, embedded
- Electric Kerfa® SAVAC® heating systems, suspended
- Installation-ready Kerfa® heating elements
- Custom solutions
- Extensive accessories
- Spare parts

## Service

- Complete customer-specific production
- Feasibility studies
- Technical consultation during furnace engineering
- Worldwide installation
- Complete furnace linings
- Modernization and relining of existing installations

## Technical Details

### Vacuum-Formed Parts

- Kerfa®-specific construction for increased stability and durability, even under vacuum
- Kerfa® sealing ledge to prevent unwanted heat transmission
- Kerfa® SAVAC® fibers feature low heat capacity and low thermal conductivity
- Minimal shrinkage and high thermal shock resistance
- Very high insulation values of Kerfa® SAVAC® insulating systems
- Kerfa® ceramic pot ideal for mounting Kerfa® SAVAC® insulating systems
- Dimensionally stable at high temperatures
- Easy replacement of vacuum-formed parts
- Rapid temperature adjustment

### Heating Element

- Kerfa® heating elements are set at a distance from furnace wall and arranged in stable rows
- Optional mechanical safety hooks for heating wires
- Hollow-moulded Kerfa® heating wires, open in front
- Kerfa® electric resistive heating featuring high power density
- High temperature precision

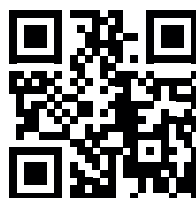
### Temperature Ranges

Kerfa® SAVAC® insulating systems: Max. 1.600°C  
Kerfa® heating elements: Max. 1.400°C

We aim to create long-term partnerships and base our activities on the concept of unconditional customer orientation. For more information, visit [www.kerfa.com](http://www.kerfa.com).

Tell us your requirements and we will put together a tailor-made solution for you. Feel free to contact us at any time.

**Kerfa® – Made in Germany – used world wide**



[www.kerfa.com](http://www.kerfa.com)

Kerfa GmbH  
An der Kohlenbahn 30  
58135 Hagen  
Germany  
Phone: +49 2331 94 61-0  
Fax: +49 2331 94 61-49  
[info@kerfa.com](mailto:info@kerfa.com)  
[www.kerfa.com](http://www.kerfa.com)